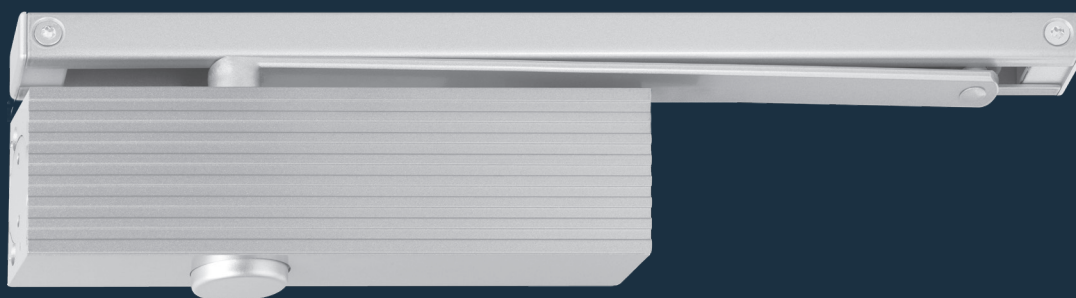


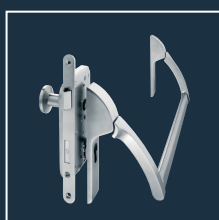
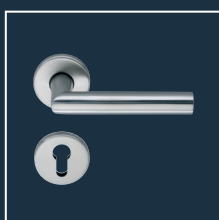
ECO **Newton** TS-15 K



## Product information



### ■ SYSTEM TECHNOLOGY FOR THE DOOR



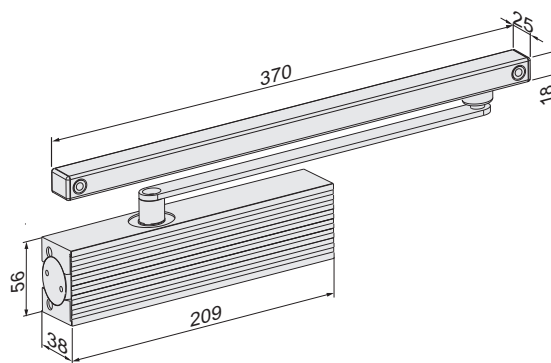
**SWISSDOOR**  
DØRTEKNIK FOR PROFESSIONELLE

## Product characteristics

TS-15 K

Closing force	Size acc. to EN	1/2
Door width	≤ 800 mm	■
Dimensions	Length in mm Depth in mm Height in mm	209 38 56
Mounting plate		-
Hinge side and hinge-opposite side		■
DIN left / right		■
Latching speed (adjustable from the side)		■
Closing speed (adjustable from the side)		■

- Yes
- No
- Option



Dimensions: TS-15 K



Steel door



Wooden door



Profile frame door



Body + ECOslide:  
Silver RAL 9006



Body + ECOslide:  
White RAL 9016



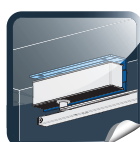
Body + ECOslide:  
Black RAL 9005



Body + ECOslide:  
Brown RAL 8014

Slide rail and standard arm are always delivered in the same colour as the ordered door closer body.

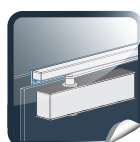
ECO Newton TS-15 with slide rail K



Under-lintel angle  
for door closer



Under-lintel angle  
for slide rail



Adaptor profile

# Order information

## ECO Newton TS-15 K ■ Door closer with slide rail

### Product information

- Closing force 1 / 2 acc. to EN (for door width to 800 mm)
- Latching speed and closing speed continuously adjustable from the side
- Same version DIN left and DIN right
- Height only 38 mm
- Max. door opening angle: 180°

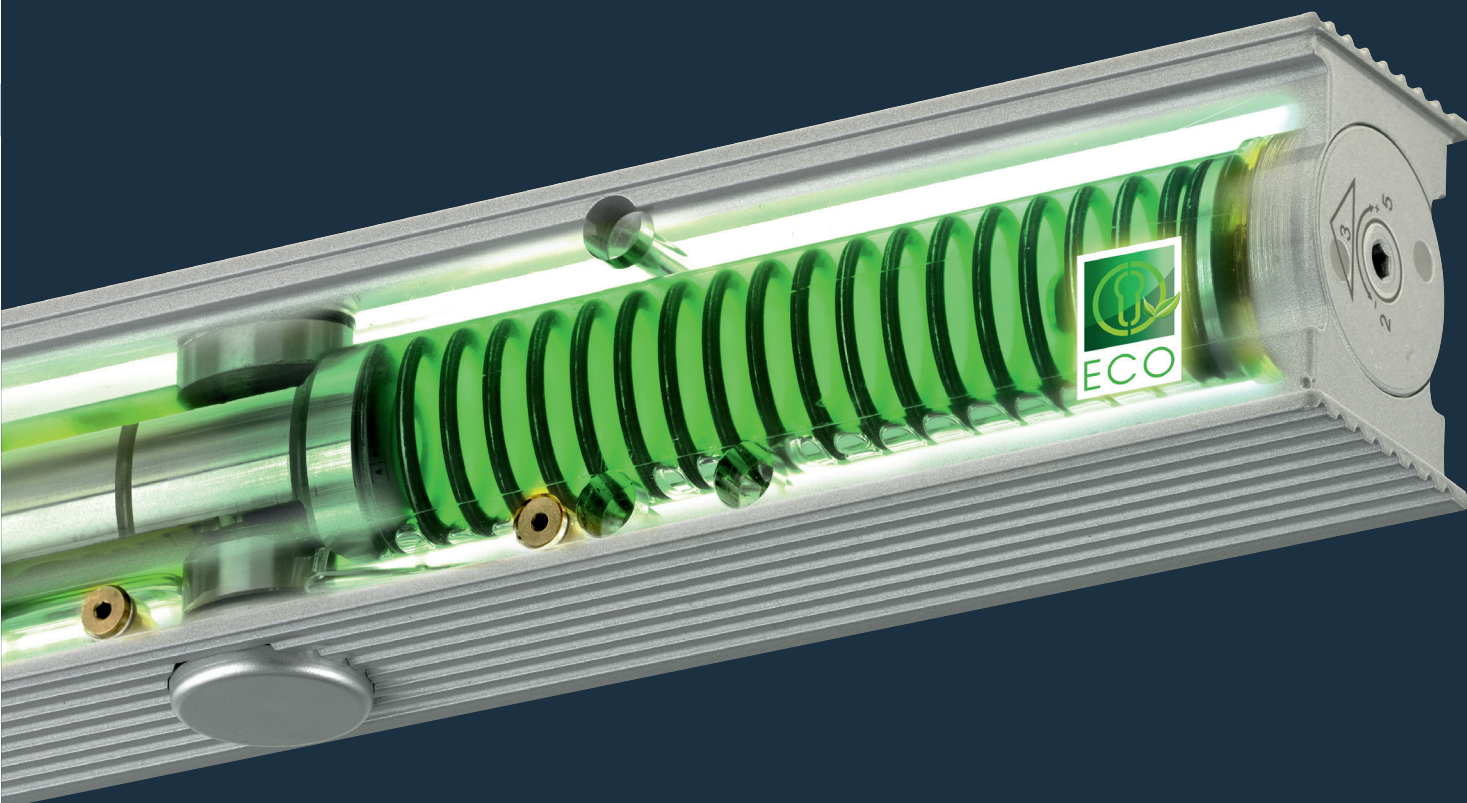
### New packaging:

Set incl. door closer body, slide rail and arm K.

### Article numbers



Door closer with slide rail K	Colour			Article number
TS-15 K (1/2)	Silver	RAL 9006		301552E11A09010
TS-15 K (1/2)	White	RAL 9016		301552E11E09010
TS-15 K (1/2)	Brown	RAL 8014		301552E11D09010
TS-15 K (1/2)	Black	RAL 9005		301552E11G09010



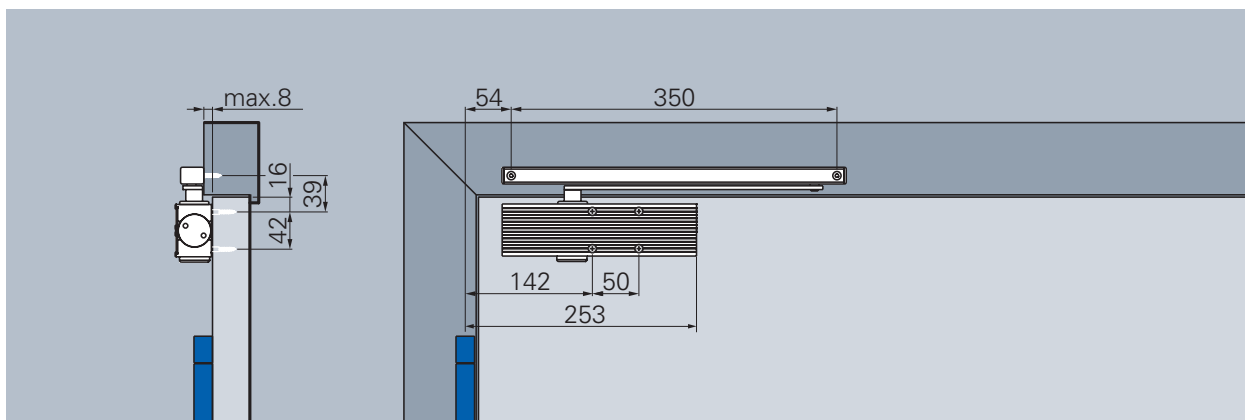
## ECO Newton Highlights in detail.

### **Saves resources:**

ECO Newton door closers are up to 1.000 grammes lighter than comparable solutions. Their intelligent construction and carefully planned use of materials help considerably to save resources.

# Hinge side

Mounting with slide rail K, illustration DIN left door, DIN right laterally reversed



With slide rail K

## Closing speed

Continuously adjustable closing speed from approx. 180° to 0°

## Latching speed

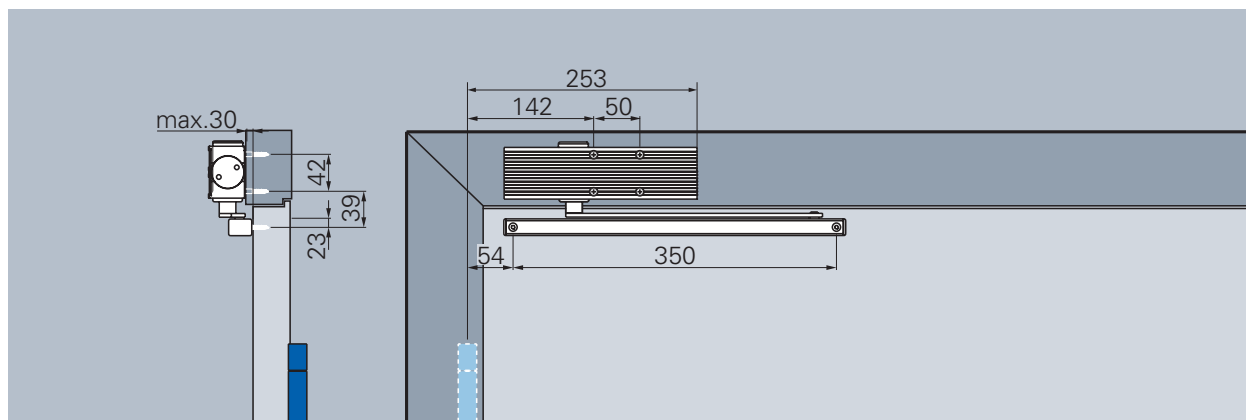
Increases the closing speed and thus the safe closing of the door, for example to overcome door seals, door locks and high air pressure. Continuously adjustable, works between 10 to 0°

Closing force diagram ECO Newton TS-15 K, hinge side



# Hinge-opposite side

Mounting with slide rail K, illustration DIN right door, DIN right laterally reversed



Head mounting with slide rail K, hinge-opposite side

## Closing speed

Continuously adjustable closing speed from approx. 140°\* to 0°

## Latching speed

Increases the closing speed and thus the safe closing of the door, for example to overcome door seals, door locks and high air pressure. Continuously adjustable, works between 10 to 0°

Closing force diagram ECO Newton TS-15 K, hinge-opposite side



\*Varies according to door thickness and type of hinge

**A door stopper for opening limit is a must!**

**Danish seller:**

**Swissdoor ApS**  
Stenhuggervej 2  
DK-5471 Soendersoe  
Tlf.: +45 86 28 00 00  
mail@swissdoor.dk  
www.swissdoor.dk